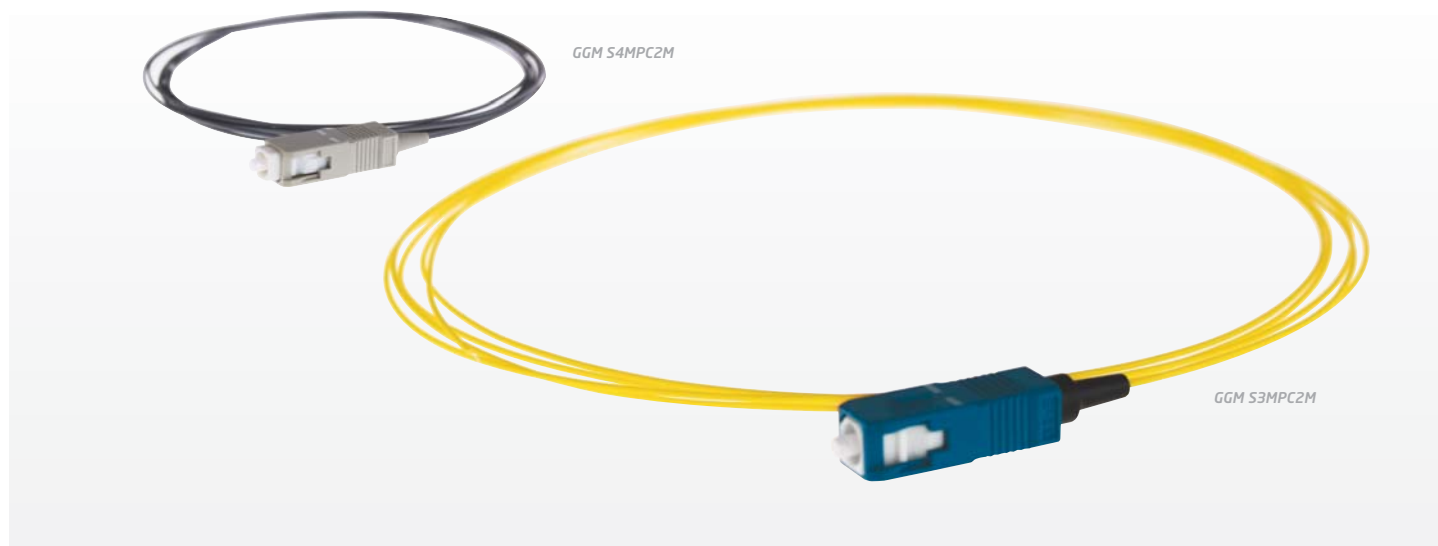


PIGTAILS SC



Thanks to a stringent quality policy & individual inspection/testing of each manufactured piece, Gigamedia patchcords offer a high level of performance at a fair price. Each patchcord is packaged individually and delivered with a unique serial number & individual IL/RL test report.

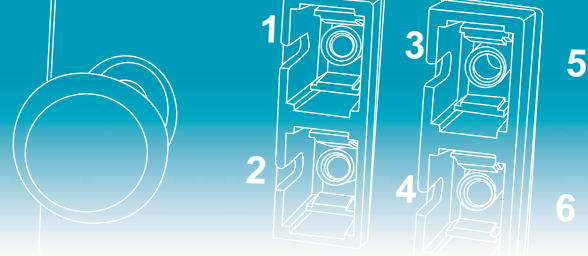
MECHANICAL PROPERTIES

	OM4	OS2	OM1	OM2	OM3
Connector body	plastic	plastic	plastic	plastic	plastic
Ferule surface	convex	convex	convex	convex	convex
Core Diameter	$50 \pm 2,5 \mu\text{m}$	$9.2 \pm 0.4 \mu\text{m}$	$62,5 \pm 2,5 \mu\text{m}$	$50 \pm 2,5 \mu\text{m}$	$50 \pm 2,5 \mu\text{m}$
Cladding diameter	$125 \pm 2.0 \mu\text{m}$	$125 \pm 1.0 \mu\text{m}$			
Cladding non-circularity	$\leq 1.0\%$	$\leq 1.0\%$	$\leq 1.0\%$	$\leq 1.0\%$	$\leq 1.0\%$
Core/cladding concentricity error	$\leq 1.5 \mu\text{m}$	$\leq 0.6 \mu\text{m}$	$\leq 6.0 \mu\text{m}$		
Ferule material	ceramic (ZrO2) inner diameter 126 μm	ceramic (ZrO2) inner diameter 127 μm	ceramic (ZrO2) inner diameter 126 μm	ceramic (ZrO2) inner diameter 127 μm	ceramic (ZrO2) inner diameter 127 μm
Polishing method	PC	UPC	PC	PC	PC

OPTICAL PROPERTIES

	OM4	OM3	OM2	OM1
Typical loss	$\leq 2,7 \text{ dB/km (850nm)}$ $\leq 0,8 \text{ dB/km (1300nm)}$	$\leq 2,7 \text{ dB/km (850nm)}$ $\leq 0,8 \text{ dB/km (1300nm)}$	$\leq 2,8 \text{ dB/km (850nm)}$ $\leq 0,8 \text{ dB/km (1300nm)}$	$\leq 3 \text{ dB/km (850nm)}$ $\leq 1 \text{ dB/km (1300nm)}$
Bandwith (MHz.km)	$\geq 3500 \text{ MHz.km (850nm - OFL)}$ $\geq 500 \text{ MHz.km (1300nm - OFL)}$ $\geq 4700 \text{ MHz.km (850nm - EMBc*)}$	$\geq 1500 \text{ MHz.km (850nm - OFL)}$ $\geq 500 \text{ MHz.km (1300nm - OFL)}$ $\geq 2000 \text{ MHz.km (850nm - EMBc*)}$	$\geq 500 \text{ MHz.km (850nm - OFL)}$ $\geq 500 \text{ MHz.km (1300nm - OFL)}$	$\geq 200 \text{ MHz.km (850nm - OFL)}$ $\geq 500 \text{ MHz.km (1300nm - OFL)}$
Typical insertion loss	$\leq 0,15 \text{ dB}$	$\leq 0,15 \text{ dB}$	$\leq 0,15 \text{ dB}$	$\leq 0,15 \text{ dB}$
Max. insertion loss	$\leq 0,25 \text{ dB}$	$\leq 0,25 \text{ dB}$	$\leq 0,25 \text{ dB}$	$\leq 0,25 \text{ dB}$
Typical Return Loss	$\geq 35 \text{ dB}$	$\geq 35 \text{ dB}$	$\geq 35 \text{ dB}$	$\geq 35 \text{ dB}$
Mating cycles	1000 (variation 0,2dB)	1000 (variation 0,2dB)	1000 (variation 0,2dB)	1000 (variation 0,2dB)

*EMBc calculated thanks to the DMD mask Method



Performances required by ISO 11801 OS1 & OS2 categories are both fully satisfied.

OTHER SPECIFICATIONS
OF FIBER ON REQUEST

	OS2		
Typical cable Loss	≤ 0.39dB/km (1310-1625nm)	≤ 0.25dB/km (1550nm)	
Chromatic dispersion	≤ 3 ps/nm*km(1285-1330nm)	≤ 6 ps/nm*km (1270-1340nm)	≤ 18ps/nm*km (1550nm)
Typical Insertion Loss	≤ 0,15dB		
Max. Insertion Loss	≤ 0,25dB		
Typical Return Loss	≥ 50dB		
Mating cycles	1000 (variation 0,2dB)		

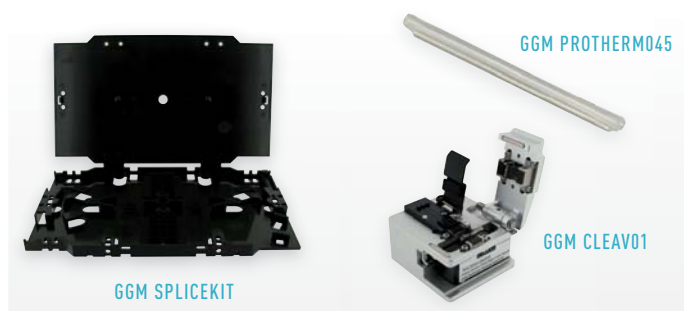
CABLE MECHANICAL PROPERTIES

	OM4	OS2	OM3	OM2	OM1
Construction			tight buffer 900µm "Easy strip"		
Tensile strength			3N		
Crush resistance			0.1N/mm, max 1N/mm short term		
Min. Bending radius during installation			30mm		
Temperature range during operation			-5°C à +60°C		
Outer sheath material			LSHF		
Outer sheath color	Aqua	Yellow	Grey	Green	Blue

COMPLIANCE

- IEC 61754-3 ; Bellcore/Telcordia GR-326; EIA/TIA 604-4
- EIA/TIA 568; ISO/IEC 11801 2nd Ed, EN 50173; JIS C5973 F04; ITU-T G651; ITU-T G652D; ITU-T G652B
- IEEE 802.3

ACCESSORIES



P/N	DESCRIPTION
GGM SPLICEKIT	Splice tray kit for 2x6 fusion splices + cover, strain relief comb & fixing clips
GGM PROTHERM045	45mm heat shrinkable tube
GGM PROTHERM060	60mm heat shrinkable tube
GGM CLEAV01	Fiber optic cleaver (250/900µm fiber)

PART NUMBERS

P/N	DESCRIPTION				
GGM S1MPC1M	Pigtail SC	50/125	OM2	1m	
GGM S1MPC2M	Pigtail SC	50/125	OM2	2m	
GGM S2MPC1M	Pigtail SC	62.5/125	OM1	1m	
GGM S2MPC2M	Pigtail SC	62.5/125	OM1	2m	
GGM S3MPC1M	Pigtail SC	9/125	OS2	1m	
GGM S3MPC2M	Pigtail SC	9/125	OS2	2m	
GGM S4MPC2M	Pigtail SC	50/125	OM3	2m	
GGM S5MPC1M	Pigtail SC	50/125	OM4	1m	
GGM S5MPC2M	Pigtail SC	50/125	OM4	2m	
GGM S1MPC2ML	12 packed SC OM2 colored pigtails			2m	
GGM S3MPC2ML	12 packed SC OS2 colored pigtails			2m	
GGM S4MPC2ML	12 packed SC OM3 colored pigtails			2m	